

PAPER • OPEN ACCESS

## Place attachment of the public space in Krueng Cunda

To cite this article: Yenny Novianti *et al* 2018 *IOP Conf. Ser.: Earth Environ. Sci.* **126** 012154

View the [article online](#) for updates and enhancements.

You may also like

- [Optimization of water distribution for channel irrigation networks Krueng Baro Kiri scheme \(Aceh-Indonesia\)](#)  
I Yanita, A Azmeri and E Fatimah
- [The change of land use patterns and cover on the surface runoff in Krueng Meuraksa sub-watershed](#)  
A Savitri, A Achmad and N Fadly
- [Cropping pattern and schedule using K-Factor for optimizing irrigation networks operation in Krueng Jreu Irrigation Area, Aceh, Indonesia](#)  
Syahrul, M Yasar and R Safira



The Electrochemical Society  
Advancing solid state & electrochemical science & technology



249th  
ECS Meeting  
May 24-28, 2026  
Seattle, WA, US  
Washington State  
Convention Center

# Spotlight Your Science

**Submission deadline:  
December 5, 2025**

**SUBMIT YOUR ABSTRACT**

## Place attachment of the public space in Krueng Cunda

**Yenny Novianti, Nurlisa Ginting and B O Y Marpaung**

Master Degree Programme of Architecture, Faculty of Engineering, Universitas Sumatera Utara, Medan, Indonesia

E-mail: yennynovianti81@gmail.com, nurlisa.ginting@gmail.com and beny.marpaung@usu.ac.id

**Abstract.** Attachment to place will have an impact on the design a city, especially the public space. Part of important from place attachment can the great benefit in from a city. One of the result is influence to quality of life from urban society. That is not only, but forming of identity a city, dependence and sense of place. That is all measureable when the people have activity to place. Place attachment is connection human to place involve a psychological process. As for the issue in reservoir area and the river of Krueng Cunda. The main purpose in this study is find interaction individuals or urban society to public space. This study have use mixed method are combination with quantitive and qualitative. The quantitative method make use of questionnaires and qualitative with observations. The results of this study indicate that psychological process is more dominant than attachment to the place or human. At finally is this research show attachment to the psychological process feel better than to community because can fulfill a sense, comfortable, safety, lifestyle and goal needs of life to the public space.

### 1. Introduction

Place attachment is substantial role in realizing the success of designing a city with public space as an element. The growing that is inseparable from the life processes of society and individuals so that will recognized with meaning and function to the place. Unlike the case with the psychological process can be felt with the role of emotions, connections and behavior of urban society. Eventually the place has characteristics that are suitable with both physical and social features. Place attachment formed in the public space will determine the quality of life for community city. The impact of place attachment will affect both mental health and community psychology in the city. The development of public space in metropolis other than in Indonesia is already the most important part of urban design as elements.

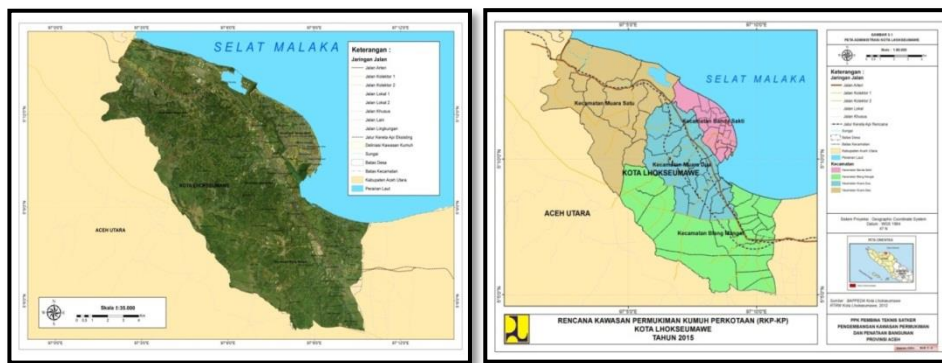
In essence, the public space is a capable of giving, responding and providing for all general activities. It was filled with physical, social and cultural characteristics can be understood with the meaning of the place so that the realization of the identity a city. At early, headway that are tends to growth naturally without urban design. Forever the city's need for the presence of communal area is an important part of urban design, not only that have appeal and identity of the city because it is support by the physical, social and cultural places. The success of the city lies not only in the design of the public sphere but the continuous interaction between space and society in an optimally all time to form attachment to the place. Place attachment is part of the interaction between humans and places that involve emotion [1]. In essence, emotions have a dizzying role in shaping attachment to place [29].

Attachment does not occur by itself but need the existence of individual, psychological process and region [16]. The formulation of problems studied is attachment to place in the reservoir area and Krueng Cunda River boat for individuals and society Lhokseumawe City.



The objective study was found attachment in the reservoir and Krueng Cunda area for the community people. Specifically, this study have two product: 1. Theories as guideline of design public space; 2. The practice will be developed to improve facilities and fulfilled all the need. The benefit on this paper such as: the development of activity attachment and behavior as part of from human lifestyle; capable of contribute to establishes the identity of the town; able to construct is meaning of place, its physical and social views; improve the quality theirs life.

This study in Krueng Cunda area, Lhokseumawe city, Aceh Province. Geographically, the reservoirs and Krueng Cunda are between 04°54'- 05°18' North Latitude and 96°20'-97°21' East Longitude. Administratively, the reservoir area and Krueng Cunda have limits as follows: the north is border by Pusong, Banda Sakti Sub-district; the southern side is Cunda, Muara Dua District; the west is Cunda, Muara Dua District and the East by the Malaka Strait (figure 1).



**Figure 1.** Waduk dan Krueng Cunda Area Map.  
(Source: Google Earth, 2016)

The research area is the strategic location of Lhokseumawe city. The area of Krueng Cunda is a naturally occurring space as is the case with artificially formed reservoirs (figure 2). Not only that Krueng Cunda has a natural uniqueness. Unique a river that is a fusion with the ocean off and the main route that divides on spot are. So that is form a small island.



**Figure 2.** Area Map Waduk dan Krueng Cunda.  
(Source: Google Earth, 2016)

The Krueng Cunda and Reservoir have landscape feature and urban society with unique characteristic become interest view for area. The uniqueness of landscape have waters from the sea. So it has a natural feature that can change when certain. The landscape can influence activity in this space. This is evident from social views at the site. As for views of these social, is jogging, fishing, anglers, fishing fish, looking for oysters, relax, selling, walking and others (see figures 3 and 4). Social-culture is specific element, when its indicated unique characters of settlement [1]. The culture in their environment could be give a meaning, so different in each the place could be given a unique itself.



**Figure 3.** Atmosphere Research Area.

Attachment to the place will be influenced by the comfort to atmosphere of the place and then comfort when activities. This region support by economic potentials. In fact, urban communities have a good place dependence on livelihoods, lifestyles and hobbies (see figure 4).



**Figure 4.** Krueng Cunda Area Lhokseumawe City.

(Source: www.google.com 2016)

Place attachment is the relationship between human to space and both to involve of psychology [16]. Not inseparable from the concept, the development of attachment where Leila Scannell and Robert Gifford [16] mentioned that attachment to the place is a series of two things: between the individual and the meaning of the environment. The attachment is basis of emotion with specific physical location and in particular is the individual's interaction with that space [15]. The identity of place will be built significantly not only of physical elements but also non-physical [6]. Place attachment dimension are human beings both as individuals and communities, psychological processes and area as the most dominant element [18]. Certainly, the growth that is connection to relationship between urban society with characteristic a location, not only there is comfort and security the area and then that is leading attribute in social interaction to manifest itself [15]. The sense of place is part of the belief in place, emotion and behavior of the place [3].

## 2. Research's Methodology

In this study is descriptive the research. So, this research used mix-method with the combination among quantitative and qualitative methods. A quantitative method conducted with doing used distribute questionnaires to the respondent as user in area. While a qualitative were doing with observations for activity and interviews society. No like that, the method doing with observation for landscape views on spot area. This study was doing since 2015 to 2016. The respondent divided into two chategory other hand reguler and mobile as users in this paper. Questionnaires were distributed for 150 users in spot the place. When the people that performs to activity continuously on research area as namely reguler user but different with mobile users not doing perform constantly. In basically, both the questionners are either permanent users or no, still have different characteristics. The character of the sample is composed of age, occupation, culture, activities to place.

Collecting data using by the quetioner. Therefore, method in analyzing data is doing with triangulation method. Then, all data will be analyzed with used SPSS. There are many variable, only one of function variable working with analyzed different in frequency. While others, its will be analyzed with percentage on value from possitive responses; actual value and correlation for all variable. As for the variabel is meaning; emotion; connection of connective; behaviour; physical view and social feature.

## 3. Result and Discussion

In basically, this result will be devided of dimension in place attachment. All the result data will analyzed and following of three dimensions: 1) Individual attachment; 2) Psychological Attachment; 3) Place Attachment. Individual attachment used meaning and function variabels. From the first analyzing of data. Individual connection on place will be calculate using two variabels; meaning and function of variable. Therefore psychologically process will evaluated with three the variabels; emotion, connection and bahaviour in this research area. The last dimension is attachment place, will analyzed with physcal and non-physcal view. In finding the attachment of the meaning of place to the community, then use the following indicators: 1 Experience; 2) Place perception; 3) Land of livelihood; 4) Memory; 5) Pattern of life; 6) Quality of life. While the functional attachment to clarify the function of places for the people of Lhokseumawe City.

### 3.1. Individual attachment

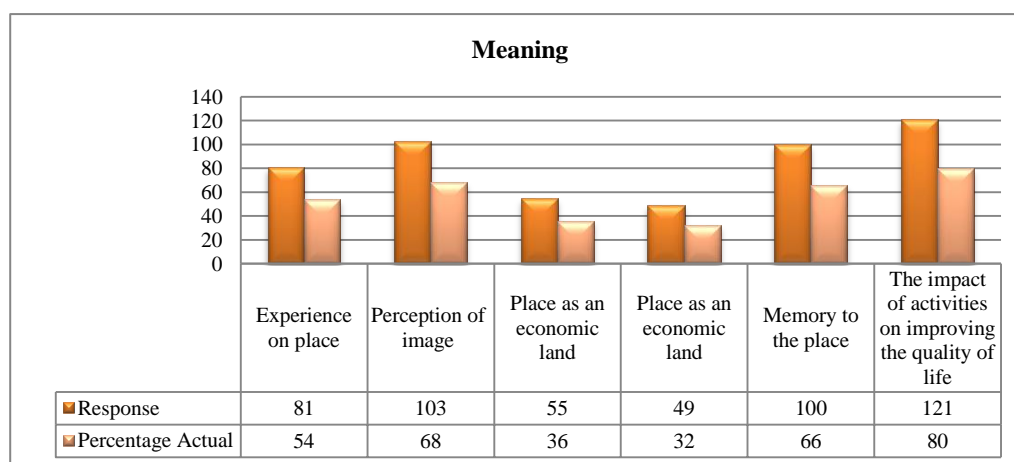
The first variable is individual attachment. This paper will be analyzed with using two the variable, such as: meaning of place and function. Meaning attachment is something of familiar a place, when each the people have perception or definition in environment for pattern of life the society. This variable may be looking in this table. Then result in study is respon by the other society for each indicators (table 2).

**Table 1.** Attachment of meaning.

Variable	Indicator	Response	Percentage Actual	Correlation
<b>Meaning</b>	Experience on place	81	54	Perception of image The impact of activities on improving the quality of life
	Perception of image	103	68	Experience on place -
	Place as an economic land	55	36	- The impact of activities
	Place as an economic land	49	32	- -
	Memory to the place	100	66	The impact of activities
	The impact of activities on improving the quality of life	121	80	Experience Life of pattern
<b>Total persentase</b>		<b>56,60%</b>	<b>56,60%</b>	

Based on table 2 and graph 1 showed that meaning is not something a significant by respondents, looking with low value on variable. Urban society can indicated by way to know with function of place for our live. In fact, this meaning might be definated when the each peoples activities in place and then impact for quality our life. In graphs 1 and 2, the other indicators that play an active role in shaping the attachment of meaning include: experience, place perception, lifestyle and effects. It is also reinforced by the correlation that exists between indicators so that the attachment of meaning is formed in the public space in Krueng Cunda area. The results of the study not explain that the attachment of meaning have the people. This variable is found but will the attachment is only medium value, so that the identity of the place also does not become the dominant aspect in the place attachment.

**Graph 1.** Attachment of meaning.



The individual attachments used in the following describe the functional attachment of the study area. Based on table 3 shows attachment of place emphasizes the activities favored by the Lhokseumawe society is to relax with a choice of priority objects where visiting. This is done because the perception

of place based on the function of the place as a place with a variety of activities. Frequency and intensity of the community routinely has a duration of time ranging from 1-2 hours to the atmosphere of visiting is the afternoon. The functional attachment affirms that where there is a pattern of life and hobbies. Of course this is inseparable from the perceptions, experiences, impacts derived from the activities undertaken. In the end, it was found that the function of the place although on a medium scale. However, individual attachments continue to run and repeatedly and encourage people to stay and working to area.

**Table 2.** Function attachment.

Variable	Indicator	Selection
<b>Function</b>	User activity	Relax
	This object as priority places to visit	Yes
	Perception of image by function	Place with variety of activities
	Visibility frequency and intensity	Yesterday
	Duration of activity	1-2 hours
	Atmosphere of interest	Afternoon

*3.2. Psychological attachment*

The two aspect in this attachment is psychological process. The aspect have three variables: emotion, connection of connective and behaviour. Respect the society is looking from affective may be definition the emotion peoples. The people will be have sense of place and strong on feeling to location. The impact from attachment is linkage pattern and a part of relation will involved the difference emotion to each user in specifiks environment. Therefore, will be observe used this variable with several indicators as follow in table.

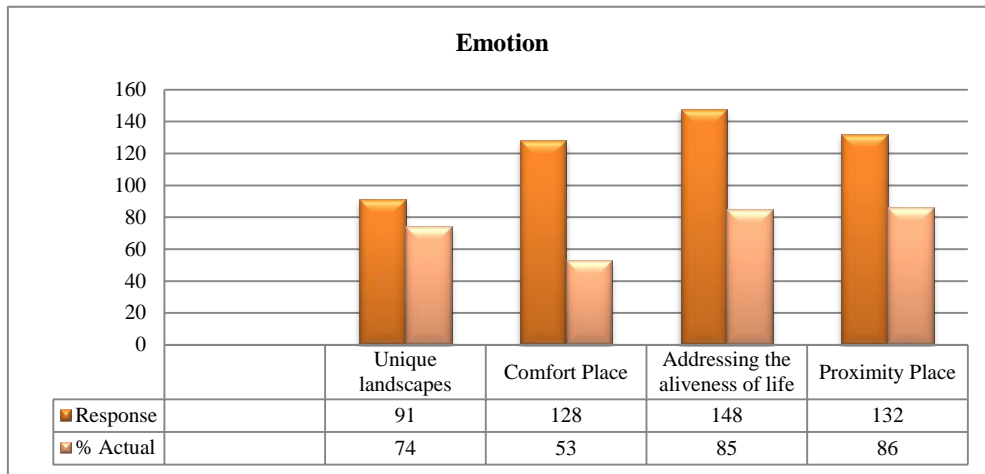
**Table 3.** Emotion Variable.

Variable	Indicator	Response	Percentage Actual	Correlation
<b>Emotion</b>	Unique landscapes	91	74	Comfort Place Addressing the aliveness of life
	Comfort Place	128	53	Unique landscapes
	Addressing the aliveness of life	148	85	Unique landscapes
	Proximity Place	132	86	-
<b>Total percentage</b>		<b>83%</b>	<b>82%</b>	

This result in table 4 and graph 2 explained that the each people have better the felling as form affective on site. Although, the each indicator might be have differently respon by individual and urban society. Surely, the variable as one of important aspect in paper because might be involved of all sense, feeling and then situation in each individual or community. Proximity place is indicator has nice a sense the respon society. Therefore, community can be feel is not only comfort, but familiar on space would be influenced of sense or feeling in each people. One of reason for stay to visiting in location cause the place can be give a quite in each individuals and other hands: unique landscape (natural views), atmosphere of comfort area, and then the variable is excellent rating category. This variable have better emotional attachment of society, its able to form attachment a region. Emotionally people

are encouraged to keep visiting; to meet the community; a part of needs in life; given to new life patterns and hobbies. Finally, the society have linkage of sense is strong comfortable for our life.

**Graph 2.** Emotion Attachment.



Not only that, the emotions of the community are encouraged to visit because of the uniqueness of water from Krueng Cunda and reservoirs so that the region is able to overcome the fatigue of life after a day of living activities. The uniqueness of the landscape that blends with the sea that at any time is able to change in accordance with the water is not only utilized by fishermen, oyster seekers and anglers and fish net. so as to affect the emotions when activity continuously. The pleasant emotion of from activities be doing by the people of Lhokseumawe City. Then more is relaxation as choice of priority activity when be visiting, although there are still have variation the other activities. One of impact between emotion of individual with the krueng Cunda. The end result can strengthen the emotional attachment with the discovery of correlation between indicators of these variables. The next variable in psychological attachment is connetive the other community. That variables using each indicators: memory; experience and place meaning (table 5).

**Table 4.** Connection coneqtive.

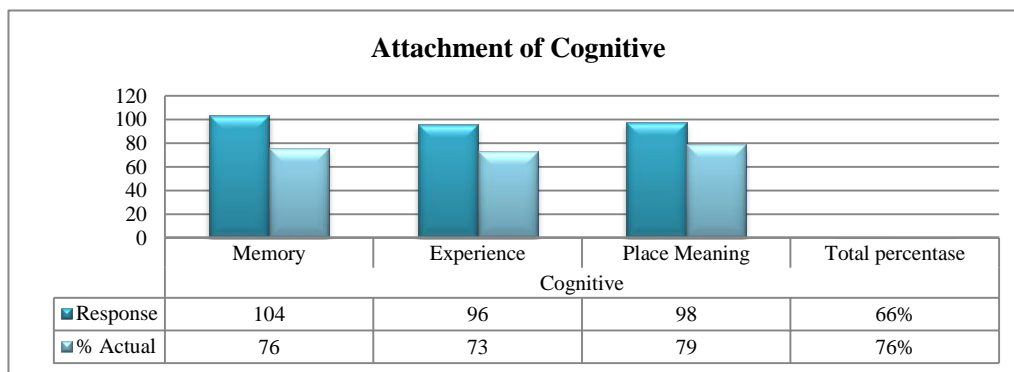
Variable	Indicator	Response	Percentage Actual	Correlation
Coneqtive	Memory	104	76	Experience
	Experience	96	73	Meaning of place
	Place meaning	98	79	-
<b>Total persentage</b>		<b>66 %</b>	<b>76 %</b>	

The later, the two variable is one of signifkaint in psychology process. Place could be connected to psychology of human or society. To connect process the psychology, so need some indicators as follows; memory, experience and place meaning. The results on this table explained that was found and related to attachment form by all indicators with enough rating in category. Individual psychology is able to relation pattern, so meaningful place for life the people. Not only, that the human could be indicated with interaction of place with natural environment. The location is one of part from the development constantly as follow in specific area. Therefore, place meaning could be described with diversity of charaterictic in each for the place. Differences are capable of involving some indicators.

The society would be knowed a place with psychology process and that result a understanding or meaning in each the environment kept distinct.

Place meaning have indiqator better than of memory as connected in the attachment, interaction between inviduals and place it is as experience by respondent. While, memory of area that is join to relationship in theirs the environment. And then, with meaning and memory. In the end, all the visitor have experience encouraged the community to visit. In the end the correlation is able to assert indicators that are able to synergize with several indicators in establishing attachment to behavior (table 5 and graph 3).

**Graph 3.** Attachment of cognitive.



The last psychological aspect in study is behavioral. The later, variables have observed in this indicators: behaviour according to the purpose of visiting; culture influences activities; environmental awareness; behaviour as need life (Table 6).

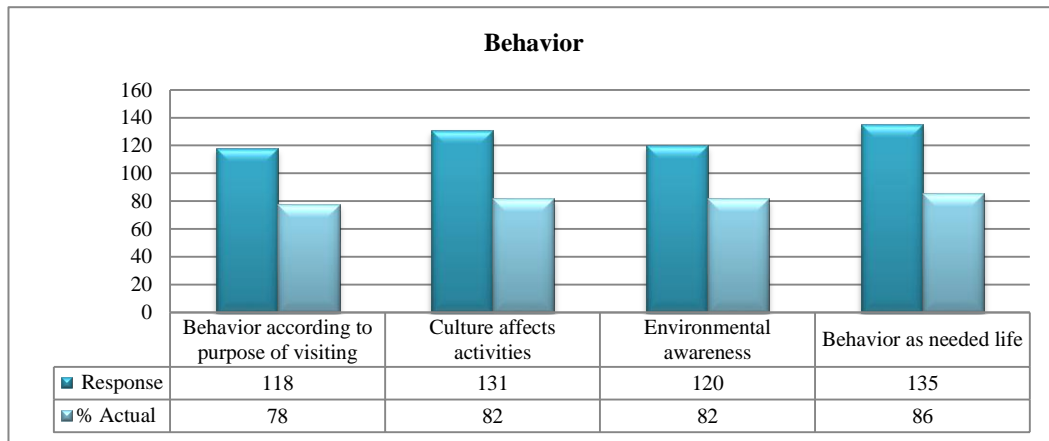
**Table 5.** Attachment of behaviour.

Variable	Indicator	Response	Percentage Actual	Correlation
<b>Behavior</b>	Behavior according to purpose of visiting	118	78	Culture affects activities
	Culture affects activities	131	82	Environmental awareness
	Environmental awareness	120	82	Culture affects activities
	Behavior as needed life	135	86	Behavior according to purpose of visiting
<b>Total percentase</b>		<b>84 %</b>	<b>82,5%</b>	

Based on table 6 and graph 4 suggests the results of research related to the variable attachment behavior in the people of Lhokseumawe City with excellent rating category. This strengthens the attachment to the place formed from the attachment of behavior between the people of Lhokseumawe

City and the Krueng Cunda area. The results also show a synergistic correlation between community behavior is part of the purpose of visiting and the impact on the culture of the community. In essence, the attachment of behavior becomes part of the routine of society continuously in the area of Krueng Cunda. Which place to meet the necessities of the life. Correlations are also formed on several indicators on behavioral variables thus reinforcing that behavioral attachments are formed from some of these indicators.

**Graph 4.** Attachment of behaviour.



Basically, in every the indicators having correlation is fine. The community behavior as need their life. In fact, there is better value from respond the society. No like that, but will be correlation with purpose on visiting and impact from activity the culture. Therefore, behavior is a description of characteristic the culture that is owned by each the human.

### 3.3. Attachment to place

The attachment of the place studied in this study then use two variables, namely: the attachment of physical features, the attachment of social features. The attachment of physical features to the people of Lhokseumawe City was tested using several indicators as follows (table 7).

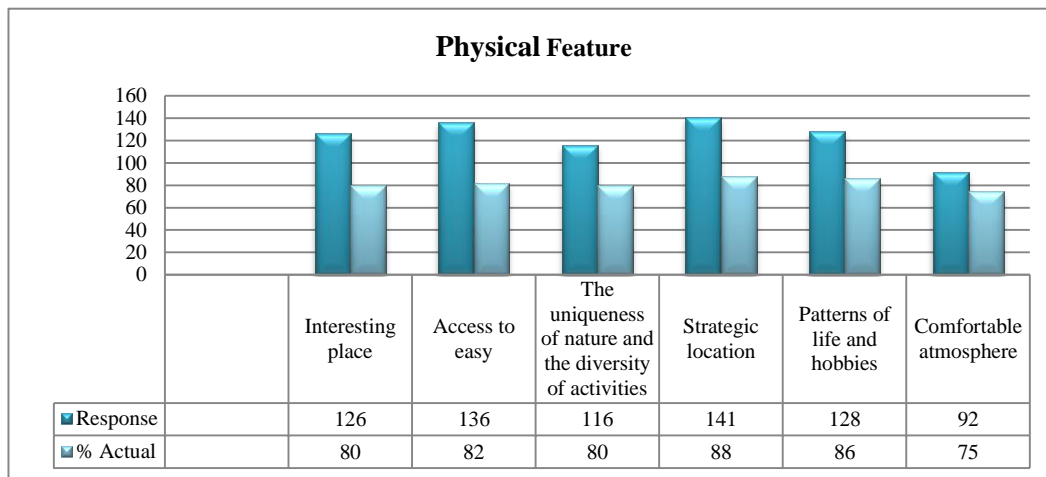
**Table 6.** Physical feature.

Variable	Indicator	Response	Percentage Actual	Correlation			
<b>Physical Feature</b>	Interesting place	126	80	Access to easy	The uniqueness of nature and the diversity of activities	Patterns of life and hobbies	Comfortable atmosphere
	Access to easy	136	82	Interesting place	The uniqueness of nature and the diversity of activities	Patterns of life and hobbies	Comfortable atmosphere
	The uniqueness of nature and the diversity of activities	116	80	Interesting place	Access to easy	Strategic location	Patterns of life and hobbies Comfortable atmosphere
	Strategic location	141	88	The uniqueness of nature and the diversity of activities		Patterns of life and hobbies	Comfortable atmosphere
	Patterns of life and hobbies	128	86	Interesting place	Access to easy	The uniqueness of nature and the diversity of activities	Patterns of life and hobbies Comfortable atmosphere
	Comfortable atmosphere	92	75	Interesting place	Access to easy	The uniqueness of nature and the diversity of activities	Strategic location Patterns of life and hobbies
<b>Total the percentage</b>		82%	82%				

The last for on this paper is attachment place. As shown in table 7 and graph 5, respondent indicated each of the seven indicators with total percentage on variable is 82 % and might be category as better attachment. Although, there is considerable variation in how these respondent array their attachment place. This paper, described that responded from each the indicator have different of value. Then, there is variable support for attachment itself place, such as: strategic location (88%); pattern of life and hobbies (86%); access to easy (82%); unique and interesting place (80%) and comfortable atmosphere (75%). The last time in research, so that showed appeal of view with uniqueness place is combination the water between the sea and the Krueng Cunda; atmosphere of the breezy wind; a quiet space and comfortable place will be supported by natural environment and safety. It is rarely encountered today. Therefore, characteristic space as natural landscape and this support with extence area as strategic location in center of Lhokseumawe City. In case, so give access to location is easy. capacity convince the community to keep doing the activity.

Therefore, so this paper described that correlation to each the variable is main aspect in attachment the place. One of indicator is interesting place have correlation with access to easy, unique environment dan various activities, lifestlye and hobbies, comfortable atmosphere. This attachment can be find, if the human have interest to place and need the support by correlation in each the indicator. Then interesting place have percentage actual is fine in the attachment. Strategic location is main indicator in physicaly variable, cause there is have better relation in this research. In forming the attachment really need support, its others; unique environment dan various activities, lifestlye and hobbies and comfortable atmosphere.

**Graph 5. Physical feature.**



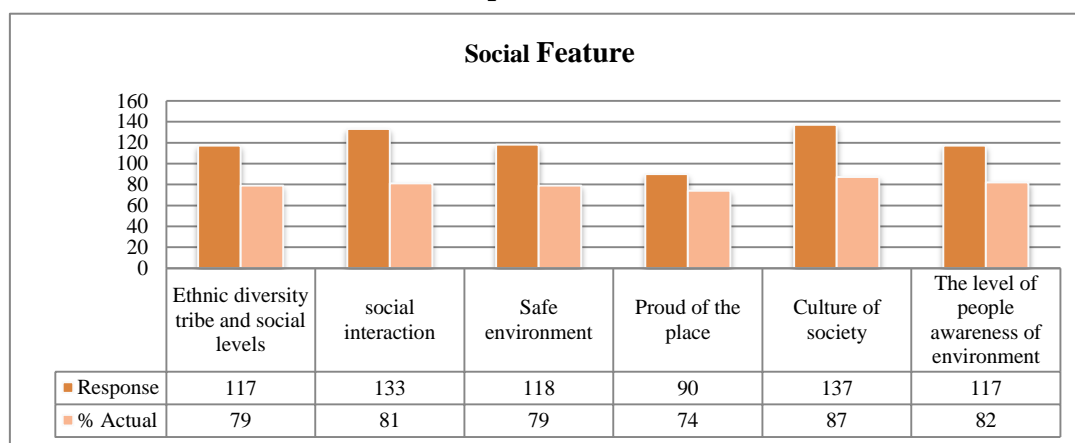
In condition, interesting to physical element could be indicated by respondent. The place have some of function. The region would be to used as interaction of public space for all needs in lifestyle and hobby from for the people; variation from the environment impact to variation of activities; strategic of location; lifestyle and hobbies; comfortable with atmsosphere. Thus strengthening the formation of attachment to the place. The diversity of activities encourages the community to keep visiting and activities. Shown to interest on area impact of each the activities, such as: relax, jogging, exercising, fish trowel, fishing fish, looking for oysters and selling. The later, there is attachment described physical feature as dominant variable and can be support on their place. In description by the people of Lhokseumawe City very well. Another thing is reinforced and correlation by indicator. The finish, there is sosial feature as significant variable in attachment concept. Place will be indiqate with supply a space give and open public for all the activities from society in Lhokseumawe City. The next, this study found the attachment of social features to the rating category is excellent. The variables formed on variable and there are able to correlate between each the indicators as follows.

**Table 7.** Social feature.

Variable	Indicator	Response	Percentage Actual	Correlation
<b>Social Feature</b>	Ethnic Diversity Ethnicity and social level	117	79	Social interaction
	Social interaction	133	81	Ethnic Diversity and social level Safe Environment
	Safe Environment	118	79	Social interaction
	Proud of the place	90	74	-
	Culture of society	137	87	-
	Level of environmental awareness	117	82	Social interaction
	<b>Total percentase</b>		<b>79%</b>	<b>80%</b>

The results of this study explain that social is one of variable and becoming the factor in attachment to the place for human. The development of period was not able to change the culture and social interaction in the research area. Characteristic social and culture the society is unique of spatial. Unique of the environment is need the support by a place, where there are give space for all activity is sustainible with all need the human. Difference for activity is becoming one of reason the society to visit on place. Therefore, in forming the attachment each the variable will be correlated, so result is correlation. This correlation is social interaction as important indiqator. In fact, that there is need the support from others the indiqator, such as: ethnic diversity and social level, safe environment and level of environmental awareness. Culture of society have better value from respond the society, but have not correlation with others the indiqator. Its indicated that characteristic the society is a need and a reflection of behavior and action that is lifestyle inseparable with their life. This indiqator would be result various the culture in each the place.

**Graph 6.** Sosial feature.



In addition, social features can the growth. Surely, its a carrying capacity of nature in continue to be maintained. There is shows that the people have awareness and care in protecting for interaction on their environment. Of course, social activity is pattern of livelihood the urban community such as meeting location to all activities for fullfill need, lifestyle and hobbies is always time and others. Place is convident for all culture from others the humans and its becoming one of factor the form a diversity of social activities. Safety area can give the comfort for human, so impact to sense of enjoying in the place. The development of social community be constantly is maintain in their life such as fishermen, either as a hobby but a livelihood pattern. Variation on feature is significant variable from interaction the society, so need to saving the atmosphere is becoming indentity of place in every time. The last, the human have understanding for social feature can be have place meaning in their life.

**4. Conclusions**

This result was observe from this study in Krueng Cunda and the Reservoir area for the human in Lhokseumawe of City will be distinguished by the following dimensions of attachment: Individual attachment; Psychological Attachments; Place Attachment.

**Table 8.** Recapitulation of site attachment research results.

Variable	Indicator	Response	Percentage Actual	Category
Meaning	Perception of Place, Experience, Pattern of Life and Impact of life pattern	56 %	56 %	Medium
Emotion	Leisure Places, Unique landscapes, Overcoming aliveness of life	83 %	82 %	Very Good
Cognitive	Experience of Place, Meaning of place	66 %	76 %	Good
Behaviour	Culture affects activities, Behavior according to the needs of life, Environmental awareness, Behavior according to the purpose of visiting	84 %	82 %	Very Good
Physical Feature	Easy Access, Uniqueness of nature and diversity of activities, Strategic location, Pattern of life and hobbies, Comfortable Atmosphere,	82 %	82 %	Very Good
Social Feature	Easy Access, Uniqueness of nature and diversity of activities, Strategic location, Pattern of life and hobbies, Comfortable Atmosphere	79 %	80 %	Very Good

Basically, there was shown of respons from each the society to variable and percentage of actual the value for six variables. Nothing also, correlations could be explain that found a related from each the indiqator in others the variable. Certainly, each the individuals will be definated for space appropriate with social and culture in others the person; every need theirs life (meaning and function); unique of environment (physical-non physical view); comprehensively would be involved the psychology (emotion, cognitive, behaviour). The identity of meaning will be difficult in each the human, but acordance with paraqdima, the culture, necessities, experience, landscape the environment and emotion. However ever could be better the interaction between the psychological process with the community in the places and then its indicated as good attachment in place. There is looking for related the interaction from emotional variables with behavior on the spot place, so that form the activity itself continuously on spot research. This reinforces that attachment of the place is not only formed by a sense of place but also supported the behavior of the people in the area. When it is a place

capable with psychological the society, so could be construct of a relationship and then is better attachment in a place.

The results of subsequent research investigated by using the physical attachment feature variable and social features form a good interaction between the city so that identity will be formed with physical features and social features well for the community. Not only that, there is also dependence in specific place to the community from the attachment of physical features and social features. However, physical features are perceived to be more dominant in terms of attachment to place than to social features. The finish, attachment is characteristic in specifik environment. There is have interesting and unique itself for the place and surely could be influence of function the space as basic activities the society and then there is pattern of their life so can be improving in next time. Identity of area could be respond with behavior and unique landscape as relationship between psychology and place variable. While characteristic the society is shown as identity of environment and it is a part of reflection from social-culture in theirs life.

### Acknowledgement

This research is a work completed as the requirements of the Master Program in Master of Architecture Engineering Faculty of The Architecture University of North Sumatra. Thanks a lot of for support and attention especially to Mrs. Nurlisa Ginting, Ir., M.Sc., Ph. D., IPM as my supervisor one and Mrs. Beny O.Y.M., ST., MT., Ph.D.,IPM as my supervisor two.

### References

- [1] B O Y Marpaung 2017 *Socio-Cultural Impacts in the Formation of Urban Village* 180
- [2] Brown and Raymound 2007 *The relationship between place attachment and landscape values: Toward mapping place attachment* *Geografi* **27** 89-111
- [3] Corina Bogdan, Liliane Rioux, Valeria Negovan 2011 Place attachment, Proactive coping and well-being in university environment. *Procedia- Sosial and Behavioural Sciences* **33** 865-869
- [4] Bradley S. Jorgensen Richard C. Stedman 2006 A comparative analysis of predictors of sense of place dimensions: Attachment to, dependence on, and identification with lakeshore properties *Journal of Environment Management* **79** 316-27
- [5] Corina Bogdan, Liliane Rioux, Valeria Negovan 2011 Place attachment, Proactive coping and well-being in university environment. *Procedia- Sosial and Behavioural Sciences* **33** 865-69
- [6] Cresswell and Holloway 2009 Place www. Elsevier.
- [7] Ginting, N and Rahman, N Vinky 2016 Maimun Palace Heritage in Medan , Indonesia: What We Preserve and Why We Preserve? *Procedia-Social and Behavioral Science* **222** 332-41
- [8] Ginting, N & Wahid, J 2015 Exploring Identity's Aspect of Continuity of Urban Herrytage Tourism *Procedia-Social and Behavioral Sciences* **20** 234-41
- [9] Ginting, N, Nasution, A D, Rahman, N Vinky 2017 More Attractive More Identified Distinctiveness in Embedding Place Identity *Procedia- Sosial and Behavioural Sciences* 00, 000-000
- [10] Ginting, N 2016 How self-efficacy enhance Herrytage Tourism in Medan Historical Corridor, Indonesia *Procedia- Sosial and Behavioural Sciences* **234** 193-200
- [11] Gustafon, P 2001 Meaning of Place : Everyday experience and theoritical Conseptualizations. *Journal of Environment Phsycology* **21** 5-16
- [12] Greg Brown, Christopher M. Raymond, Jonathan Corcoran 2015 Mapping and measuring place attachment. *Geography Journal* **57** 42-53
- [13] Grace Setiati, Imam Santoso, Achmad Syarief 2015 Gender dan Place Attachment pada Coffee Shop di Bandung *Journal Sositoknologi* vol 14 no 3
- [14] Hashemnezhad Hasyem, Yazdanfar Seyed Abbas, Heidari Ali Akbar, Behdadfar Nazgol 2013 Between Sense and attachment : Comparing the concepts of place in architectural studies. *Malaysia Journal of Society and Space* **9** 96-104
- [15] Hidalgo and Hernandez 2001 *Place Attachment: Conceptual and Empirical Question*

- [16] Hernandez and Hidalgo *et al* 2007 Place Attachment and Place Identity in natives and noo natives *Journal of Environment* **27** 310-19
- [17] Kyle, Graefe, Manning and Bacon 2004 Effect of Place attachment on user's perceptions of social and environment conditions in a natural setting *Journal of Environment Psychology* **24** 213-25
- [18] Karsono, B and Wahid, J 2015 Attribute Place Attachment. *Procedia- Sosial and Behavioural Sciences*
- [19] Leila Scannell, Robert Gifford 2009 Defining Place Attachment: A Tripartite organizing framework *Journal of Environment Psychology* **30** 1-10
- [20] Lewicka, M 2011 Place attachment: How far have we come in the last 40 years? *Journal of Environment Psychology* **31** 207-30
- [21] Nasution, A D and Zahrah, Wahyuni 2015 The Space is not ours, the life of Public Open Space in Gated Community in Medan, Indonesia *Procedia- Sosial and Behavioural Sciences* **202** 144-51
- [22] Nasution, Achmad Delianur and Zahrah, Wahyuni 2014 Community Perception on Public Open Space and Quality of Life in Medan, Indonesia *Procedia- Sosial and Behavioural Sciences* **153** 585-94
- [23] Nasution, Achmad Deliannur and Zahrah, Wahyuni 2011 Public Open Space Privatization and Quality of Live, Case Study Merdeka Square Medan. *Procedia- Sosial and Behavioural Sciences* **36** 466-75
- [24] Nicole M Ardoin 2006 Toward an Interdisciplinary Understanding of Place : Lesson for Environment Education *Canadian Journal of Environment Education* **11**
- [25] Norsidah Ujang 2012 Place Attachment and Continuity of Urban Place Identity *Procedia- Sosial and Behavioural Sciences* **49** 156-67
- [26] Raha Moghisi, Saghar Mokhtari, Ali Akbar Heidari 2015 Place Attachment in University Students Case study: Shiraz University *Procedia - Social and Behavioral Sciences* **170** 187-96
- [27] Robert Hay 1998 Sense of Place in Development Context *Journal of Environmental Psychology* **18** 5-29
- [28] Samantha Levy and Susannah Church 2012 Opening Doors and Sitting on Floors: Public Event s in private spaces: the (re) – appropriation of space throught grassroots events in Halifax *The Journal for Undergraduate Ethnography* vol 2
- [29] Sir Stuart Lipton 2003 Value of Public Space
- [30] Stephane Tonnelat 2010 The Sosiology of Urban Public Spaces *Associate Research CNRS, CRH-LAVUE Research Center, Paris*
- [31] Twigger-Ross, C L and Uzell, D L 1996 Place and Identity Process *Journal of Environmental Psychology* 205-20